

Welcome Members and Guests



**WEST LAKES
ASSOCIATION**

PROTECT PRESERVE PROMOTE

Welcome & Introductions

8/26/2017 Fall Meeting
Diann Scott, President

Secretary's Report

Garth Coons

Approval of 6/17/17 Spring Meeting Minutes

Minutes of 6/17/2017 Spring Meeting

- The meeting was called to order by President Diann Scott. Diann introduced West Lakes Association Board Members and Lake Directors.
- Welcome to attending Emergency Management, West Lakes Regional Sewer District and Red Cross volunteers. Thanks to Mother of Mercy Chapel for the use of their facility.
- It was voted to accept the August 27, 2016 Meeting minutes as distributed.
- Jill Becker presented the Treasurer's Report which was approved as noted. Checking balance was \$4,112.66 and Savings balance was \$14,272.13.
- Old Business – Information on log jams and fall 2016 river clean-up was given by Diann and Mike Kurtz.
- New Business – Diann explained how efforts were made to keep the media attention involved, and contacts to agencies and politicians. Port-a-Pots, Dumpsters. Shower & Laundry, and Red Cross sheltering, feeding, kit distribution was mentioned.
- Red Cross gave some updates on relief efforts and hours of operation.
- West Lakes Regional Sewer District gave an update on sewer conditions, and some future plans. Cindy Wick, and District workers were recognized for hard work.
- Diann presented issues such as log jams, tree removal, storm water management and agricultural damage. LARE Grant for sediment removal is possible. Agencies that may be connected with West Lakes issues, will be involved in future meetings and be more focused on action.
- Concerns from attendees were recorded and will be addressed in future meetings.
- Respectfully submitted by Garth Coons, Secretary, 260-466-5601, gcoons3@gmail.com

Treasurer's Report

Jill Becker

Treasurer's Report 8/26/2017

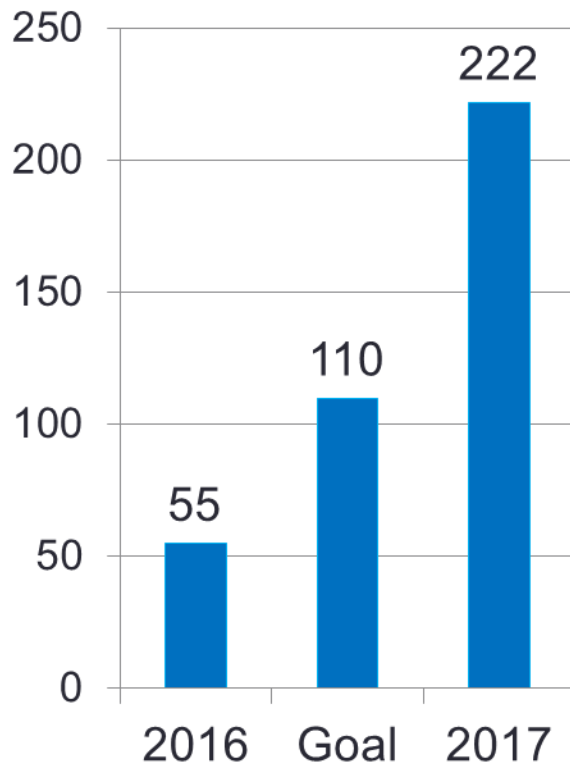
CHECKING	
6/17/2017 Beginning Balance	\$4,112.66
Expenses	
River Clean-up	(\$772.27)
Port-a-Pots	(\$579.00)
General Fund	(\$659.46)
Deposits	
Dues & Donations	\$15,821.31
8/26/2017 Ending Balance	\$17,923.24

CHECKING	
6/17/2017 Beginning Balance	\$14,272.13
Expenses	\$0.00
Deposits	
Dues & Donations	\$6,035.00
8/26/2017 Ending Balance	\$19,507.13

President's Challenge:

100% Increase membership

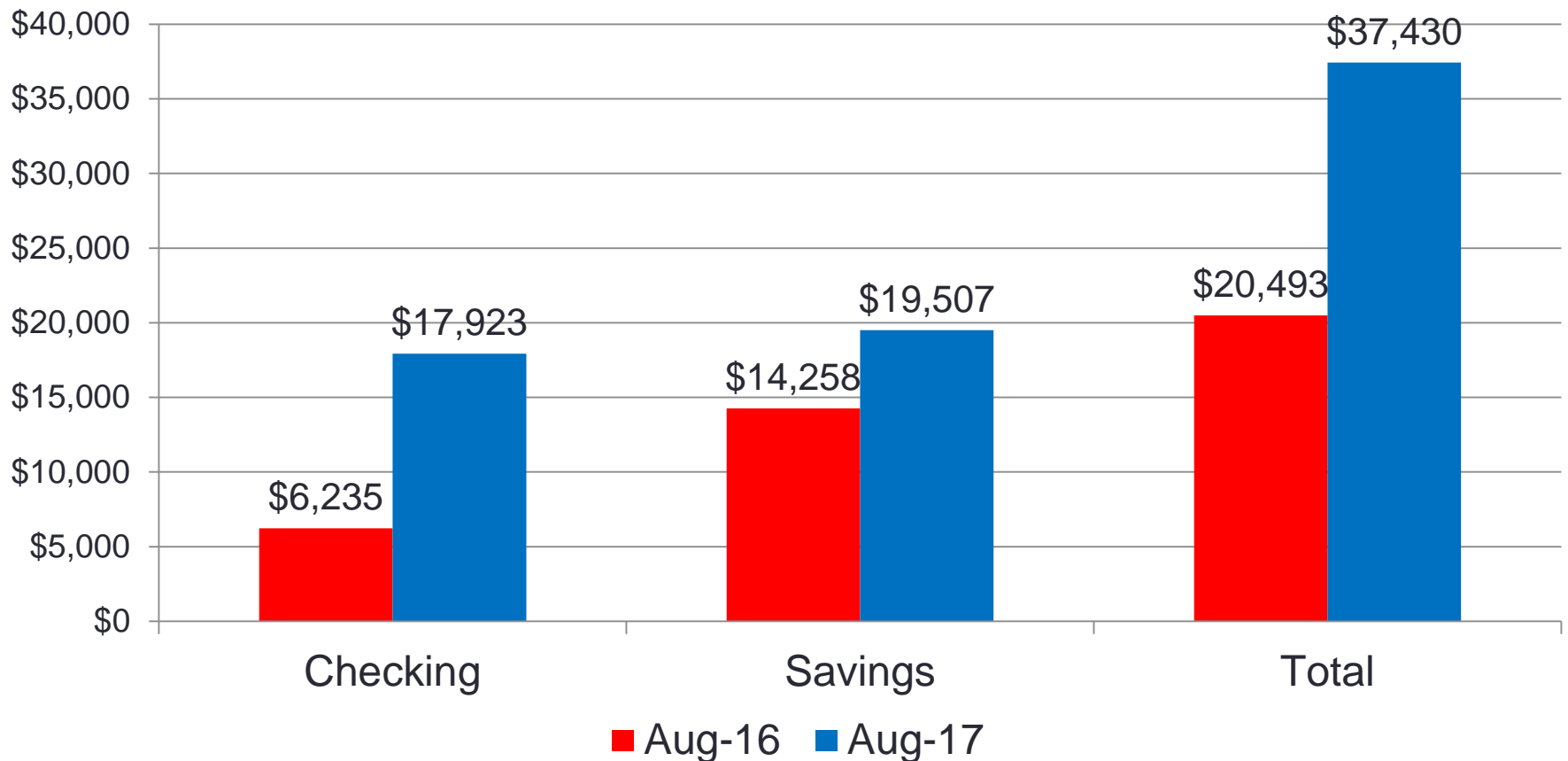
Members



2017	Homes	Members	%
Waldron	141	105	74.5%
Steinbarger	94	53	56.4%
Jones	77	30	39.0%
Tamarack	41	11	26.8%
Murray	45	11	24.4%
Shull's	90	12	13.3%
TOTAL	488	222	45.5%

President's Challenge:

Benefits of ~~100%~~ 400% Membership Increase



Extended Memberships



Extended Memberships

LOVE OUR LAKES AND RIVER?

Want to volunteer to help with our river clean-up efforts or donate by becoming an Associate Member of West Lakes Association?



Contact Mike Kurtz to volunteer for River Clean-up at kurtzgun@ligtel.com
For more information, please contact Diann Scott, President, 260-273-9441

Please consider becoming a Supporter of the West Lakes Association, complete the form below and return:

WEST LAKES ASSOCIATION ASSOCIATE MEMBER APPLICATION & DONOR FORM

Please fill out this form and make your check payable to West Lakes Association

Name _____

Mailing Address _____

Home Phone Number _____

Cell Number _____

Email Address _____

Enclosed is my Associate Member Fee of \$30

\$ _____

Enclosed is my contribution to River Clean-up Fund

\$ _____

TOTAL ENCLOSED \$ _____

PLEASE RETURN YOUR CONTRIBUTION FORM AND CHECK by mailing to:

West Lakes Association, ATTN: Jill Becker, Treasurer
0091 Frantz Drive, Wawaka, IN 46794

www.westlakesassociation.com

www.facebook.com/westlakesassociation

Want to volunteer?

Want to donate?

Old Business

Website Update

Aid & Recovery

New Website!! www.westlakesassociation.com

Lots of Information ...

- [About](#)
- [Officers & Board/Connect](#)
- [Rules & Guidelines](#)
- [Blog/News](#)
- [Lake Status](#)
- [Calendar](#)
- [Gallery](#)
- [Forms](#)
- [Maps](#)
- [Lake Directories](#)
- [Links](#)
- [FaceBook](#)

Calendar

July 12 – Agency Action Plans @ Orange Township Fire Dept. 5:30 pm (Open to all) More details in Blog/News

July 18 – Agency Action Plans @ Orange Township Fire Dept. 5:30 pm (Open to all) More details in Blog/News

July 26 – Agency Action Plans @ Orange Township Fire Dept. 5:30 pm (Open to all)

July 29 – River Clean-up. Meet at West Lakes Marina 8:00 AM. More info: kurtzgun@ligtel.com

August 5 – River Clean-up. Meet at West Lakes Marina 8:00 AM. More info: kurtzgun@ligtel.com

August 13 – West Lakes Association River Clean-Up parade entry in Chautauqua Days Parade. More info in Blog/News, West Lakes Facebook, or call 260-273-9441

August 19 – River Clean-up. Meet at West Lakes Marina 8:00 AM. More info: kurtzgun@ligtel.com

August 26 – 2017 Fall Meeting & Potluck @ West Lakes Marina
Registration 9:00 am. Meeting 10-12, then potluck. Please bring chairs.

Aid & Recovery



Southern Baptist Disaster Relief

- July – 34 mold remediation's and one tear-out
- August – 35 mold remediation's
- September – 1 tear-out

Long Term Recovery Group

- Assistance forms due 8/31
- Seeking funds and manpower to rebuild damaged homes



Volunteers

- United Way Day of Caring
- Numerous other volunteers

New Business

New Identity!!



Revealed during Chautaugua Days Parade!!

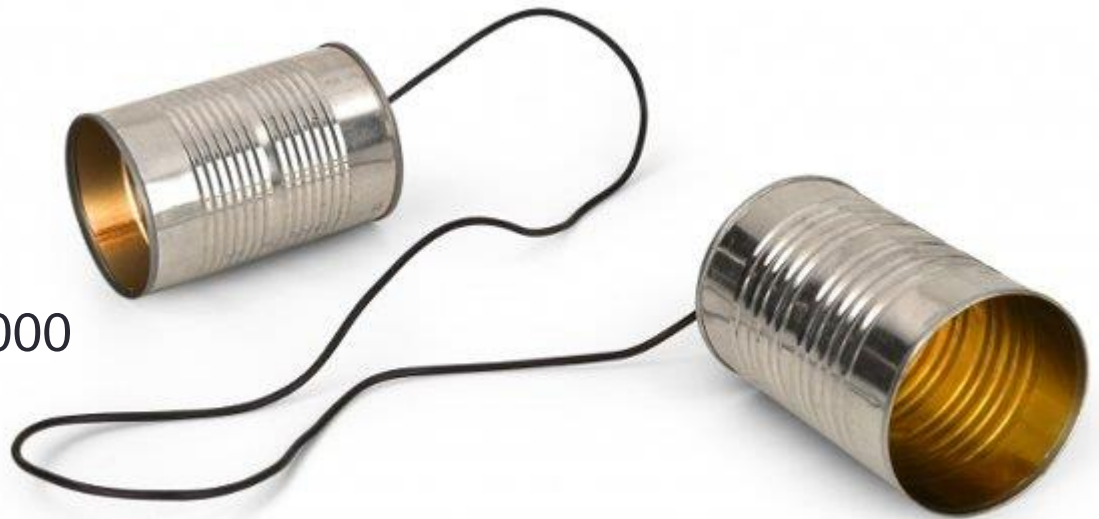


Show your pride in our community



Communication Improvements with Members

- Email Blasts
- Robo-calls
- Website
- Facebook
 - Reach in excess of 4,000
 - 700+ likes
 - Nearly 800 followers
 - Facebook *LIVE*
- Tremendous Press Coverage!!
- On-site Information Centers!!



Election of Officers

ODD YEARS - FALL MEETING	2011	2013	2015	2017
Vice President	Rick Smigielski	Rick Smigielski	Elizabeth Graham	Elizabeth Graham
Treasurer	Linda Lichtsinn	Linda Lichtsinn	Jill Becker	Jill Becker
Lake Director - Waldron Lake	Tom Goyings	Tom Goyings	Tom Goyings	Tom Goyings
Lake Director - Steinbarger Lake	Anne Bougher	Anne Bougher	Anne Bougher	Anne Bougher

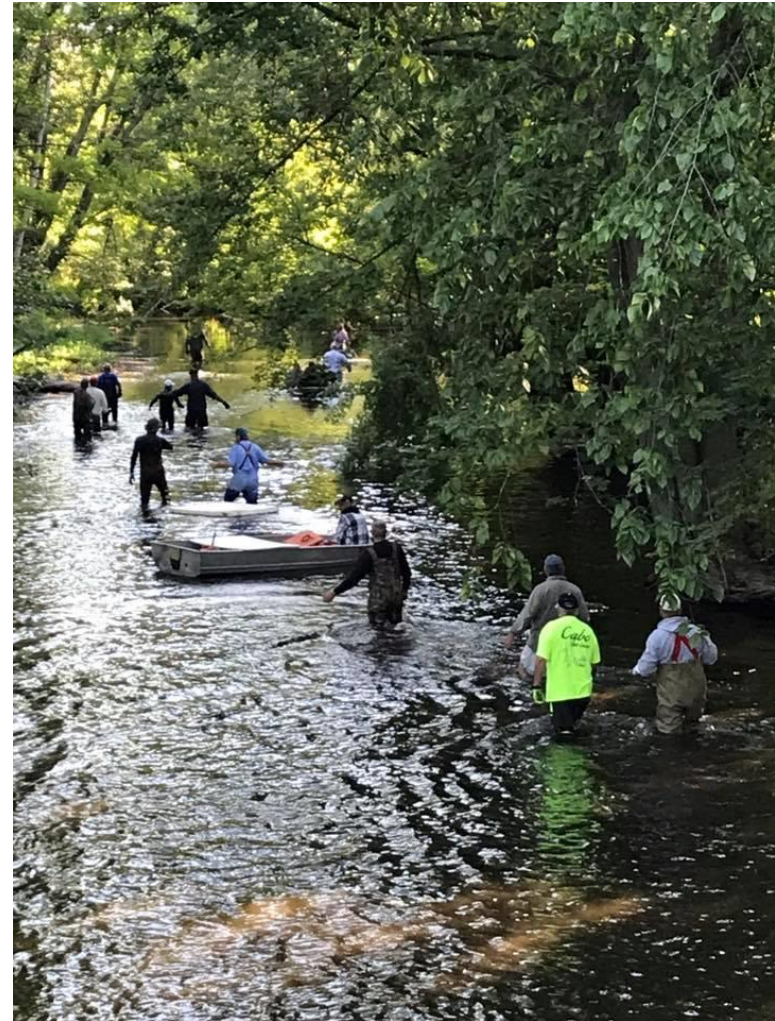
EVEN YEARS - FALL MEETING	2012	2014	2016	2018
President	Dave Wick	Gordon Anthony	Diann Scott	
Secretary	Diann Scott	Diann Scott	Garth Coons	
Lake Director - Waldron Lake	Joyce Smigielski	Joyce Smigielski	Mike Kurtz	
Lake Director - Tamarack Lake	Pam Frosch	Pam Frosch	Dave Wick	
Lake Director - Jones Lake	Ned Lichtsinn	Ned Lichtsinn	Ned Lichtsinn	
Director at Large - Pat Filler	Mike Harris	Pat Filler	Buzz Junk	

We are becoming a strong organization!

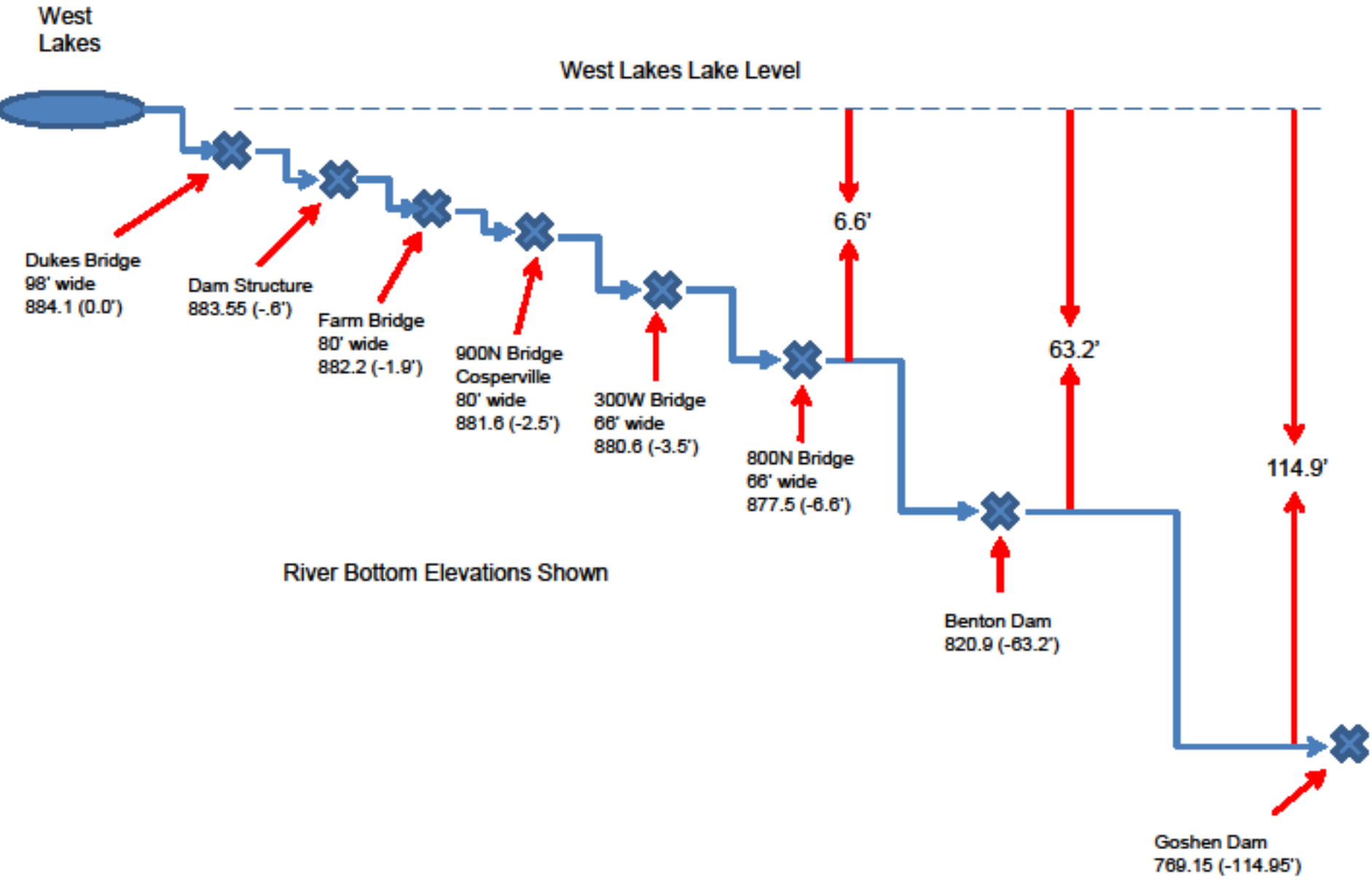
Need volunteers for the following Committees...

- Fundraising
- By-Laws
- Job Descriptions
- Dam Maintenance
- Lake Usage (Buoys, Speed Enforcement)
- Engagement with Fishing Tournaments

Fall Clean-up Efforts – Mike Kurtz



West Lakes Downstream



Call to Action #1 – July 12th

Organization	Speakers	Contact Information	Time Requested
Noble County Highway Supervisor	Zach Smith	260-636-2124, ext 6005	5:30 - 5:45
		zsmith@nobleco.org	
Lagrange County Surveyor	Rex Pranger	260-499-6307	5:45 - 6:30
		rpranger@lagrangecounty.org	
River Basin Commissions	Rod Renkenberger, Exec Director	260-499-6307	6:30 - 7:30
	Maumee Valley River Basin	rodr@mrbc.org	
	Matt Meersman, Director, St. Joseph River Basin Commission	260-463-7414	
		basindirector@macog.com	
Noble County EMA	Mick Newton	260-636-2938, cell 260-347-7378	7:30 - 8:00
		mnewton@nobleco.us	

167 attendees, plus those watching *Facebook Live*

Call to Action #2 – July 18th

Organization	Speakers	Contact Information	Time Requested
Noble County Surveyor	Randy Sexton	260-636-2131, cell 260-349-3553 rsexton@nobleco.us	5:30 - 6:15
Noble County Building Inspector	Norm Lortie	260-636-2215 nlortie@nobleco.us	6:15 - 6:45
Noble County Flood Plain Director	Ken Hughes	260-636-7217, cell 260-222-8606 khughes@nobleco.us	6:45 - 7:00
Congressman Jim Banks Office	Paul Lagemann	260-702-4750 hmurray57@hotmail.com	7:00 - 7:15
Southern Baptist Disaster Relief	Denny Smith	574-780-5157 dennysmithpbc@gmail.com	7:15 - 7:45
West Lakes Regional Sewer District	Howard Murray, Board President	260-350-0163 hmurray57@hotmail.com	

154 attendees, plus those watching *Facebook Live*

Call to Action #3 – July 26th

Organization	Speakers	Contact Information	Time Requested
Indiana Department of Homeland Security	Mary Moran	260-636-2938 mmoran@dhs.IN.gov	5:30 - 6:00
Long Term Recovery Group	David Billows	502-494-8199 d.billows51@gmail.com	6:00 - 6:15
Noble County Health & Sanitation	Jason Pippenger	260-636-2191, cell 260-564-4898 jpippenger@nobleco.us	6:15 - 6:30
LARE GRANT	Doug Nusbaum	260-244-6805, ext 239 dnusbaum@dnr.IN.gov	6:30 - 7:00
State Representative	Rep. David Ober	317-232-9643 H82@iga.in.gov	7:00 - 7:30
State Senator	Sen. Susan Glick	260-463-7414 senator.glick@iga.in.gov	<i>Not Speaking</i>
Noble County Commissioners	Gary Leatherman, Dave Abbott, Dave Dolezal	260-636-1290 gleatherman@nobleco.us,	7:30 - 8:00

147 attendees, plus those watching *Facebook Live*

USACE Meeting – August 8th

- *AM* – USACE & West Lakes Association Discussion and Site Tour
 - *PM* – Multi-Agency Discussions
 - Participation was Outstanding!! We were expecting 9 participants and had 31!!
- USACE – 5
 - DNR – 4
 - Homeland Security - 2
 - Noble County – 9
 - LaGrange County – 2
 - Senator Glick
 - Governor's Office
 - Congressman Banks' Office – 2
 - Maumee River Basin
 - St Joseph River Basin
 - US Fish & Wildlife
 - USGS
 - North Branch Flood Commission
 - West Lakes Association - 2

USACE Meeting – Items for Next Meeting

1. **Waldron Lake Gage** – *USGS, WLA, Noble County*
2. **Aquatic Vegetation in Transition Area**
 - *Management of Existing Trees – WLA, USFWS, USFS*
 - *Removal of Vegetation – WLA, IDNR*
3. **Assemble Regional Team to Speak on Behalf of Residents** – *SJRBS, Diann Scott, Gene Lightner*
4. **Nutrients and Buffer Strips** – *NRCS, Congressman Banks' Office, WLA, USDA*
5. **Buyouts & Elevation of Homes** – *WLA & Noble County*
6. **Programs & Grants**
 - *Planning Assistance to States – USACE, Noble Cty, WLA, SJRBC*
 - *List of Grants Opportunities in Silver Jackets Report – WLA*

Our Action Plans & Project Leaders

Project	Tasks	Project Leader	Agencies Involved
AGRICULTURAL IMPACTS & WATER QUALITY	Run-off, Tiling, USDA Grants to set aside land, Land Use, River Friendly Farmers, Nutrients & Buffer Strips. Establish baseline measurements and frequency of tests (lake, river), nutrients, fertilizers and chemicals	MICHAEL SCHAEFER	Soil & Water Conservation, USDA, Drainage Boards, DNR, EPA, SJRBC, MRBC
VEGETATION	Identification of native vs invasive plants, LARE Grant, Weed Harvesting,	CINDY VANDERBOSCH	DNR, SJRBC, MRBC, USFW, USFS
SEDIMENT	Understand changes, identify problem areas, LARE Grant	DOUG BORDEN	DNR, USACE, Noble Cty Surveyor
LOG REMOVAL	Evaluate current situation, LARE Grant, Process to maintain going forward	MIKE KURTZ	DNR, Noble County Surveyor
CONSERVANCY DISTRICT	Evaluate process, establish recommendations, evaluate funding needed	DAVE WINEBRENNER	DNR, Noble County Planning
NOBLE COUNTY LAKES COUNCIL	Review LaGrange & Steuben Councils, Ordinances Needed, Funneling, Flood Plan, Needs Assessment, Structure, etc.	DIANN SCOTT	Noble County Lake Associations, Noble County Commissioners
BRIDGES & ROADS	Make recommendation on items needing attention (1050 raise bridge, elevate concrete walls and approaches)	RUSS LAYMAN	Noble County Highway Dept
LAKE GAGE & PREDICTIVE FLOOD MODELING	Get lake gage back on Waldron lake. Unsteady state modeling.	DAVE WICK	DNR, USGS, USACE
FLOOD PREPAREDNESS	Flood Insurance, Anchor Propane Tanks, Elevate Water Well Heads, WLRSD, Sandbag Storage	BILL VANDERBOSCH	Noble County EMA, WLRSD
HOME ELEVATION ASSESSMENT	Buyouts, Elevation of Homes (how many still need to be raised)	DIANN SCOTT	Noble County, SJRBC, MRBC

Our Action Plans & Project Leaders

Project	Tasks	Project Leader	Agencies Involved
AGRICULTURAL IMPACTS & WATER QUALITY	Run-off, Tiling, USDA Grants to set aside land, Land Use, River Friendly Farmers, Nutrients & Buffer Strips. Establish baseline measurements and frequency of tests (lake, river), nutrients, fertilizers and chemicals	MICHAEL SCHAEFER	Soil & Water Conservation, USDA, Drainage Boards, DNR, EPA, SJRBC, MRBC
VEGETATION	Identification of native vs invasive plants, LARE Grant, Weed Harvesting,	CINDY VANDERBOSCH	DNR, SJRBC, MRBC, USFW, USFS
SEDIMENT	Understand changes, identify problem areas, LARE Grant	DOUG BORDEN	DNR, USACE, Noble Cty Surveyor
LOG REMOVAL	Evaluate current situation, LARE Grant, Process to maintain going forward	MIKE KURTZ	DNR, Noble County Surveyor
CONSERVANCY DISTRICT	Evaluate process, establish recommendations, evaluate funding needed	DAVE WINEBRENNER	DNR, Noble County Planning
NOBLE COUNTY LAKES COUNCIL	Review LaGrange & Steuben Councils, Ordinances Needed, Funneling, Flood Plan, Needs Assessment, Structure, etc.	DIANN SCOTT	Noble County Lake Associations, Noble County Commissioners
BRIDGES & ROADS	Make recommendation on items needing attention (1050 raise bridge, elevate concrete walls and approaches)	RUSS LAYMAN	Noble County Highway Dept
LAKE GAGE & PREDICTIVE FLOOD MODELING	Get lake gage back on Waldron lake. Unsteady state modeling.	DAVE WICK	DNR, USGS, USACE
FLOOD PREPAREDNESS	Flood Insurance, Anchor Propane Tanks, Elevate Water Well Heads, WLRSD, Sandbag Storage	BILL VANDERBOSCH	Noble County EMA, WLRSD
HOME ELEVATION ASSESSMENT	Buyouts, Elevation of Homes (how many still need to be raised)	DIANN SCOTT	Noble County, SJRBC, MRBC

Our Action Plans & Project Leaders

Project	Tasks	Project Leader	Agencies Involved
AGRICULTURAL IMPACTS & WATER QUALITY	Run-off, Tiling, USDA Grants to set aside land, Land Use, River Friendly Farmers, Nutrients & Buffer Strips. Establish baseline measurements and frequency of tests (lake, river), nutrients, fertilizers and chemicals	MICHAEL SCHAEFER	Soil & Water Conservation, USDA, Drainage Boards, DNR, EPA, SJRBC, MRBC
VEGETATION	Identification of native vs invasive plants, LARE Grant, Weed Harvesting,	CINDY VANDERBOSCH	DNR, SJRBC, MRBC, USFW, USFS
SEDIMENT	Understand changes, identify problem areas, LARE Grant	DOUG BORDEN	DNR, USACE, Noble Cty Surveyor
LOG REMOVAL	Evaluate current situation, LARE Grant, Process to maintain going forward	MIKE KURTZ	DNR, Noble County Surveyor
CONSERVANCY DISTRICT	Evaluate process, establish recommendations, evaluate funding needed	DAVE WINEBRENNER	DNR, Noble County Planning
NOBLE COUNTY LAKES COUNCIL	Review LaGrange & Steuben Councils, Ordinances Needed, Funneling, Flood Plan, Needs Assessment, Structure, etc.	DIANN SCOTT	Noble County Lake Associations, Noble County Commissioners
BRIDGES & ROADS	Make recommendation on items needing attention (1050 raise bridge, elevate concrete walls and approaches)	RUSS LAYMAN	Noble County Highway Dept
LAKE GAGE & PREDICTIVE FLOOD MODELING	Get lake gage back on Waldron lake. Unsteady state modeling.	DAVE WICK	DNR, USGS, USACE
FLOOD PREPAREDNESS	Flood Insurance, Anchor Propane Tanks, Elevate Water Well Heads, WLRSD, Sandbag Storage	BILL VANDERBOSCH	Noble County EMA, WLRSD
HOME ELEVATION ASSESSMENT	Buyouts, Elevation of Homes (how many still need to be raised)	DIANN SCOTT	Noble County, SJRBC, MRBC

Our Action Plans & Project Leaders

Project	Tasks	Project Leader	Agencies Involved
AGRICULTURAL IMPACTS & WATER QUALITY	Run-off, Tiling, USDA Grants to set aside land, Land Use, River Friendly Farmers, Nutrients & Buffer Strips. Establish baseline measurements and frequency of tests (lake, river), nutrients, fertilizers and chemicals	MICHAEL SCHAEFER	Soil & Water Conservation, USDA, Drainage Boards, DNR, EPA, SJRBC, MRBC
VEGETATION	Identification of native vs invasive plants, LARE Grant, Weed Harvesting,	CINDY VANDERBOSCH	DNR, SJRBC, MRBC, USFW, USFS
SEDIMENT	Understand changes, identify problem areas, LARE Grant	DOUG BORDEN	DNR, USACE, Noble Cty Surveyor
LOG REMOVAL	Evaluate current situation, LARE Grant, Process to maintain going forward	MIKE KURTZ	DNR, Noble County Surveyor
CONSERVANCY DISTRICT	Evaluate process, establish recommendations, evaluate funding needed	DAVE WINEBRENNER	DNR, Noble County Planning
NOBLE COUNTY LAKES COUNCIL	Review LaGrange & Steuben Councils, Ordinances Needed, Funneling, Flood Plan, Needs Assessment, Structure, etc.	DIANN SCOTT	Noble County Lake Associations, Noble County Commissioners
BRIDGES & ROADS	Make recommendation on items needing attention (1050 raise bridge, elevate concrete walls and approaches)	RUSS LAYMAN	Noble County Highway Dept
LAKE GAGE & PREDICTIVE FLOOD MODELING	Get lake gage back on Waldron lake. Unsteady state modeling.	DAVE WICK	DNR, USGS, USACE
FLOOD PREPAREDNESS	Flood Insurance, Anchor Propane Tanks, Elevate Water Well Heads, WLRSD, Sandbag Storage	BILL VANDERBOSCH	Noble County EMA, WLRSD
HOME ELEVATION ASSESSMENT	Buyouts, Elevation of Homes (how many still need to be raised)	DIANN SCOTT	Noble County, SJRBC, MRBC

Our Action Plans & Project Leaders

Project	Tasks	Project Leader	Agencies Involved
AGRICULTURAL IMPACTS & WATER QUALITY	Run-off, Tiling, USDA Grants to set aside land, Land Use, River Friendly Farmers, Nutrients & Buffer Strips. Establish baseline measurements and frequency of tests (lake, river), nutrients, fertilizers and chemicals	MICHAEL SCHAEFER	Soil & Water Conservation, USDA, Drainage Boards, DNR, EPA, SJRBC, MRBC
VEGETATION	Identification of native vs invasive plants, LARE Grant, Weed Harvesting,	CINDY VANDERBOSCH	DNR, SJRBC, MRBC, USFW, USFS
SEDIMENT	Understand changes, identify problem areas, LARE Grant	DOUG BORDEN	DNR, USACE, Noble Cty Surveyor
LOG REMOVAL	Evaluate current situation, LARE Grant, Process to maintain going forward	MIKE KURTZ	DNR, Noble County Surveyor
CONSERVANCY DISTRICT	Evaluate process, establish recommendations, evaluate funding needed	DAVE WINEBRENNER	DNR, Noble County Planning
NOBLE COUNTY LAKES COUNCIL	Review LaGrange & Steuben Councils, Ordinances Needed, Funneling, Flood Plan, Needs Assessment, Structure, etc.	DIANN SCOTT	Noble County Lake Associations, Noble County Commissioners
BRIDGES & ROADS	Make recommendation on items needing attention (1050 raise bridge, elevate concrete walls and approaches)	RUSS LAYMAN	Noble County Highway Dept
LAKE GAGE & PREDICTIVE FLOOD MODELING	Get lake gage back on Waldron lake. Unsteady state modeling.	DAVE WICK	DNR, USGS, USACE
FLOOD PREPAREDNESS	Flood Insurance, Anchor Propane Tanks, Elevate Water Well Heads, WLRSD, Sandbag Storage	BILL VANDERBOSCH	Noble County EMA, WLRSD
HOME ELEVATION ASSESSMENT	Buyouts, Elevation of Homes (how many still need to be raised)	DIANN SCOTT	Noble County, SJRBC, MRBC

Our Action Plans & Project Leaders

Project	Tasks	Project Leader	Agencies Involved
AGRICULTURAL IMPACTS & WATER QUALITY	Run-off, Tiling, USDA Grants to set aside land, Land Use, River Friendly Farmers, Nutrients & Buffer Strips. Establish baseline measurements and frequency of tests (lake, river), nutrients, fertilizers and chemicals	MICHAEL SCHAEFER	Soil & Water Conservation, USDA, Drainage Boards, DNR, EPA, SJRBC, MRBC
VEGETATION	Identification of native vs invasive plants, LARE Grant, Weed Harvesting,	CINDY VANDERBOSCH	DNR, SJRBC, MRBC, USFW, USFS
SEDIMENT	Understand changes, identify problem areas, LARE Grant	DOUG BORDEN	DNR, USACE, Noble Cty Surveyor
LOG REMOVAL	Evaluate current situation, LARE Grant, Process to maintain going forward	MIKE KURTZ	DNR, Noble County Surveyor
CONSERVANCY DISTRICT	Evaluate process, establish recommendations, evaluate funding needed	DAVE WINEBRENNER	DNR, Noble County Planning
NOBLE COUNTY LAKES COUNCIL	Review LaGrange & Steuben Councils, Ordinances Needed, Funneling, Flood Plan, Needs Assessment, Structure, etc.	DIANN SCOTT	Noble County Lake Associations, Noble County Commissioners
BRIDGES & ROADS	Make recommendation on items needing attention (1050 raise bridge, elevate concrete walls and approaches)	RUSS LAYMAN	Noble County Highway Dept
LAKE GAGE & PREDICTIVE FLOOD MODELING	Get lake gage back on Waldron lake. Unsteady state modeling.	DAVE WICK	DNR, USGS, USACE
FLOOD PREPAREDNESS	Flood Insurance, Anchor Propane Tanks, Elevate Water Well Heads, WLRSD, Sandbag Storage	BILL VANDERBOSCH	Noble County EMA, WLRSD
HOME ELEVATION ASSESSMENT	Buyouts, Elevation of Homes (how many still need to be raised)	DIANN SCOTT	Noble County, SJRBC, MRBC

Our Action Plans & Project Leaders

Project	Tasks	Project Leader	Agencies Involved
AGRICULTURAL IMPACTS & WATER QUALITY	Run-off, Tiling, USDA Grants to set aside land, Land Use, River Friendly Farmers, Nutrients & Buffer Strips. Establish baseline measurements and frequency of tests (lake, river), nutrients, fertilizers and chemicals	MICHAEL SCHAEFER	Soil & Water Conservation, USDA, Drainage Boards, DNR, EPA, SJRBC, MRBC
VEGETATION	Identification of native vs invasive plants, LARE Grant, Weed Harvesting,	CINDY VANDERBOSCH	DNR, SJRBC, MRBC, USFW, USFS
SEDIMENT	Understand changes, identify problem areas, LARE Grant	DOUG BORDEN	DNR, USACE, Noble Cty Surveyor
LOG REMOVAL	Evaluate current situation, LARE Grant, Process to maintain going forward	MIKE KURTZ	DNR, Noble County Surveyor
CONSERVANCY DISTRICT	Evaluate process, establish recommendations, evaluate funding needed	DAVE WINEBRENNER	DNR, Noble County Planning
NOBLE COUNTY LAKES COUNCIL	Review LaGrange & Steuben Councils, Ordinances Needed, Funneling, Flood Plan, Needs Assessment, Structure, etc.	DIANN SCOTT	Noble County Lake Associations, Noble County Commissioners
BRIDGES & ROADS	Make recommendation on items needing attention (1050 raise bridge, elevate concrete walls and approaches)	RUSS LAYMAN	Noble County Highway Dept
LAKE GAGE & PREDICTIVE FLOOD MODELING	Get lake gage back on Waldron lake. Unsteady state modeling.	DAVE WICK	DNR, USGS, USACE
FLOOD PREPAREDNESS	Flood Insurance, Anchor Propane Tanks, Elevate Water Well Heads, WLRSD, Sandbag Storage	BILL VANDERBOSCH	Noble County EMA, WLRSD
HOME ELEVATION ASSESSMENT	Buyouts, Elevation of Homes (how many still need to be raised)	DIANN SCOTT	Noble County, SJRBC, MRBC

Our Action Plans & Project Leaders

Project	Tasks	Project Leader	Agencies Involved
AGRICULTURAL IMPACTS & WATER QUALITY	Run-off, Tiling, USDA Grants to set aside land, Land Use, River Friendly Farmers, Nutrients & Buffer Strips. Establish baseline measurements and frequency of tests (lake, river), nutrients, fertilizers and chemicals	MICHAEL SCHAEFER	Soil & Water Conservation, USDA, Drainage Boards, DNR, EPA, SJRBC, MRBC
VEGETATION	Identification of native vs invasive plants, LARE Grant, Weed Harvesting,	CINDY VANDERBOSCH	DNR, SJRBC, MRBC, USFW, USFS
SEDIMENT	Understand changes, identify problem areas, LARE Grant	DOUG BORDEN	DNR, USACE, Noble Cty Surveyor
LOG REMOVAL	Evaluate current situation, LARE Grant, Process to maintain going forward	MIKE KURTZ	DNR, Noble County Surveyor
CONSERVANCY DISTRICT	Evaluate process, establish recommendations, evaluate funding needed	DAVE WINEBRENNER	DNR, Noble County Planning
NOBLE COUNTY LAKES COUNCIL	Review LaGrange & Steuben Councils, Ordinances Needed, Funneling, Flood Plan, Needs Assessment, Structure, etc.	DIANN SCOTT	Noble County Lake Associations, Noble County Commissioners
BRIDGES & ROADS	Make recommendation on items needing attention (1050 raise bridge, elevate concrete walls and approaches)	RUSS LAYMAN	Noble County Highway Dept
LAKE GAGE & PREDICTIVE FLOOD MODELING	Get lake gage back on Waldron lake. Unsteady state modeling.	DAVE WICK	DNR, USGS, USACE
FLOOD PREPAREDNESS	Flood Insurance, Anchor Propane Tanks, Elevate Water Well Heads, WLRSD, Sandbag Storage	BILL VANDERBOSCH	Noble County EMA, WLRSD
HOME ELEVATION ASSESSMENT	Buyouts, Elevation of Homes (how many still need to be raised)	DIANN SCOTT	Noble County, SJRBC, MRBC

Our Action Plans & Project Leaders

Project	Tasks	Project Leader	Agencies Involved
AGRICULTURAL IMPACTS & WATER QUALITY	Run-off, Tiling, USDA Grants to set aside land, Land Use, River Friendly Farmers, Nutrients & Buffer Strips. Establish baseline measurements and frequency of tests (lake, river), nutrients, fertilizers and chemicals	MICHAEL SCHAEFER	Soil & Water Conservation, USDA, Drainage Boards, DNR, EPA, SJRBC, MRBC
VEGETATION	Identification of native vs invasive plants, LARE Grant, Weed Harvesting,	CINDY VANDERBOSCH	DNR, SJRBC, MRBC, USFW, USFS
SEDIMENT	Understand changes, identify problem areas, LARE Grant	DOUG BORDEN	DNR, USACE, Noble Cty Surveyor
LOG REMOVAL	Evaluate current situation, LARE Grant, Process to maintain going forward	MIKE KURTZ	DNR, Noble County Surveyor
CONSERVANCY DISTRICT	Evaluate process, establish recommendations, evaluate funding needed	DAVE WINEBRENNER	DNR, Noble County Planning
NOBLE COUNTY LAKES COUNCIL	Review LaGrange & Steuben Councils, Ordinances Needed, Funneling, Flood Plan, Needs Assessment, Structure, etc.	DIANN SCOTT	Noble County Lake Associations, Noble County Commissioners
BRIDGES & ROADS	Make recommendation on items needing attention (1050 raise bridge, elevate concrete walls and approaches)	RUSS LAYMAN	Noble County Highway Dept
LAKE GAGE & PREDICTIVE FLOOD MODELING	Get lake gage back on Waldron lake. Unsteady state modeling.	DAVE WICK	DNR, USGS, USACE
FLOOD PREPAREDNESS	Flood Insurance, Anchor Propane Tanks, Elevate Water Well Heads, WLRSD, Sandbag Storage	BILL VANDERBOSCH	Noble County EMA, WLRSD
HOME ELEVATION ASSESSMENT	Buyouts, Elevation of Homes (how many still need to be raised)	DIANN SCOTT	Noble County, SJRBC, MRBC

Our Action Plans & Project Leaders

Project	Tasks	Project Leader	Agencies Involved
AGRICULTURAL IMPACTS & WATER QUALITY	Run-off, Tiling, USDA Grants to set aside land, Land Use, River Friendly Farmers, Nutrients & Buffer Strips. Establish baseline measurements and frequency of tests (lake, river), nutrients, fertilizers and chemicals	MICHAEL SCHAEFER	Soil & Water Conservation, USDA, Drainage Boards, DNR, EPA, SJRBC, MRBC
VEGETATION	Identification of native vs invasive plants, LARE Grant, Weed Harvesting,	CINDY VANDERBOSCH	DNR, SJRBC, MRBC, USFW, USFS
SEDIMENT	Understand changes, identify problem areas, LARE Grant	DOUG BORDEN	DNR, USACE, Noble Cty Surveyor
LOG REMOVAL	Evaluate current situation, LARE Grant, Process to maintain going forward	MIKE KURTZ	DNR, Noble County Surveyor
CONSERVANCY DISTRICT	Evaluate process, establish recommendations, evaluate funding needed	DAVE WINEBRENNER	DNR, Noble County Planning
NOBLE COUNTY LAKES COUNCIL	Review LaGrange & Steuben Councils, Ordinances Needed, Funneling, Flood Plan, Needs Assessment, Structure, etc.	DIANN SCOTT	Noble County Lake Associations, Noble County Commissioners
BRIDGES & ROADS	Make recommendation on items needing attention (1050 raise bridge, elevate concrete walls and approaches)	RUSS LAYMAN	Noble County Highway Dept
LAKE GAGE & PREDICTIVE FLOOD MODELING	Get lake gage back on Waldron lake. Unsteady state modeling.	DAVE WICK	DNR, USGS, USACE
FLOOD PREPAREDNESS	Flood Insurance, Anchor Propane Tanks, Elevate Water Well Heads, WLRSD, Sandbag Storage	BILL VANDERBOSCH	Noble County EMA, WLRSD
HOME ELEVATION ASSESSMENT	Buyouts, Elevation of Homes (how many still need to be raised)	DIANN SCOTT	Noble County, SJRBC, MRBC

We are strong, resilient and focused



- Dedicated Project Leaders
- Volunteer Team Members
- Progress will be Tracked
- Accountability Back to Membership

Closing Comments

- Comments from Members
- How many new members did we get today?
- Let's eat and get to know more of our neighbors!!